

1. EFTPOS 1i INTEGRATED TERMINAL QUICK INSTALLATION

It is recommended that the installation is performed following the sequence below

1.1. Pair to base

(Base must be connected to power; terminal must be switched on with sufficient battery charge)

- a. Press the Bluetooth Icon on the Base and watch for the blue blinking light on the base. This indicates the base is now broadcasting its BT ID and is waiting.
- b. The terminal will scan for the base and prompt you with a serial number
- c. Check if the serial number matches the one on the base and press 1 to pair.

1.2. Encrypt with TID:

- a. Press #
- b. Enter 7410
- c. Press 2 to enter TID

1.3. Install USB Drivers

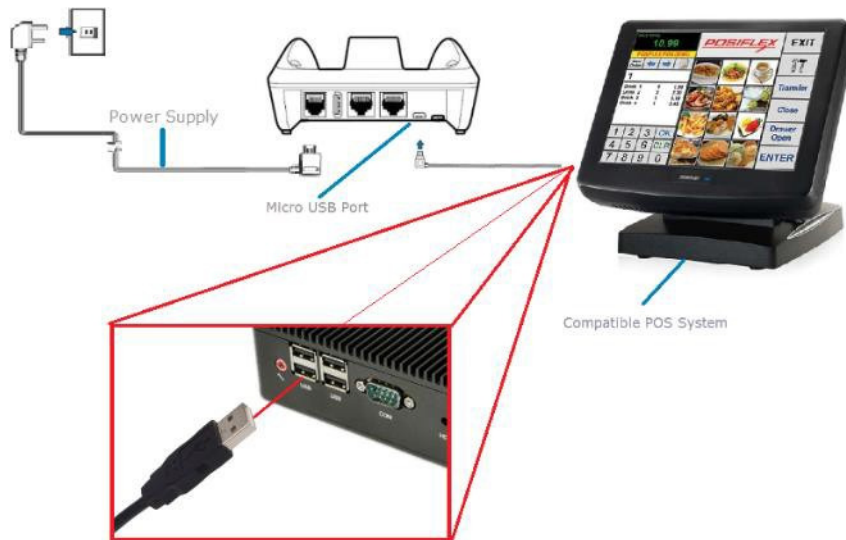
(Install only for USB connection)– Do not change the default install directory

- a. Download the drivers from the PC EFTPOS Website Copy and extract the files on to a directory on the POS.
- b. Navigate to the Install folder and double click on the “Setup.exe” to install the driver
- c. Check if the drivers have been installed correctly by going to the “Device Manager” and checking under the Ports listed as VX690 Base



1.4. Connect The Terminal to POS

It is recommended to use the supplied USB/Serial Cable that came with the kit



1.4.1. Configure the terminal to connect via USB Connection (Recommended)

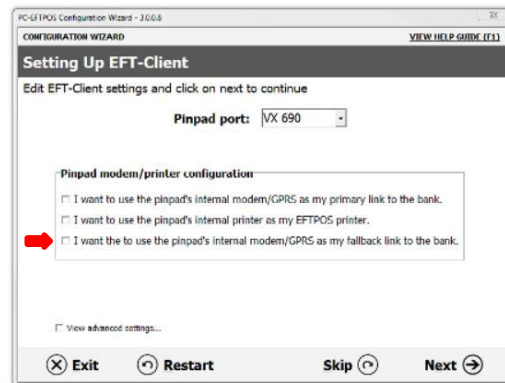
- Press #
- Enter 11112227.
- Press 1 for STX/VLI/CRC
- Press 5 for 115200
- Press 3 for USB port

1.4.2. Configure the terminal to connect via Serial Connection (Only if specified)

- Press #
- Enter 11112227.
- Press 1 for STX/VLI/CRC
- Press 3 for 38400
- Press 2 for RS232 port

1.5. Configuring backup option.

Ensure this is configured on the terminal and from the PC EFTPOS config Wizard by selecting the option below:



1.5.1. Configure GPRS Backup (Ensure this is setup as backup option)

- Press # 998
- Press 8 for Internal Modem GPRS
- Press 2 for GPRS and press Enter
- At this point, the terminal will seem to be frozen. Allow a few seconds for the changes. Once done, it will go back to the main menu. Check option 8 if it is set to GPRS

1.5.2. Configure PSTN Backup (Analogue phone line required if GPRS is not available)

- Press # 998
- Press 8 for Internal Modem
- Press 1 for PSTN and press Enter

2.5.2.1. Configure PABX (For Dial Up Backup)

- Press #
- Enter 7410
- Click Next on the screen to get to Item #6 (Comms Params)
- Enter PABX Code
- Check Host Number
- Configure Blind Dial (off by default)
- Press Enter

1.6. Install and configure PC EFTPOS

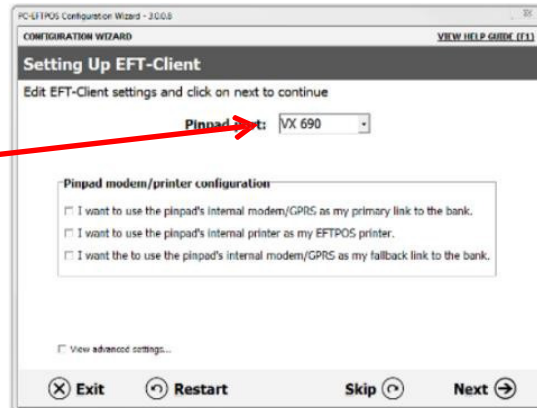
Download the latest versions from PC EFTPOS and run the configuration.
(See VX690i Field Technician Full Installation Documents for more details)

Important

PINpad Com Port must be VX690

Type VX 690

(VX 'space'690)



1.7. Logon the PPID

- Press #
- Enter 3824 press 3 write down the PPID
- Lookup the TID from the Job Sheet
- Call the Bank 1300650103
- Identify yourself as A VeriFone Agent onsite for an Install or Replacement Job.
- Provide PPID and TID data when requested.
- Helpdesk will advise confirmation of mapping.

1.8. Download TMS/Connect to TMS

- Press #
- Enter 11113333

1.9. Terminal Logon

- Go to PC EFTPOS Client GUI
- Select Ctrl Panel
- Click Logon

