



PC-EFTPOS Installation Guide

EFT Server

Release 4.0
December 07

Revision Record

Version	Date	Author	Document Preparation	Revisions
0.01	June 00	Craig Godden	Craig Godden	Document Creation
1.00	May 01	Craig Godden	Craig Godden	New installer
2.00	December 02	Clinton Dean	Clinton Dean	New installer
3.00	May 05	Clinton Dean	Clinton Dean	New installer
4.00	December 07	David O'Donnell	David O'Donnell	Vista & U32 changes

Copyright ©PC-EFTPOS Pty Ltd, 2008. This document contains information proprietary to PC-EFTPOS Pty Ltd. Any reproduction, disclosure or unauthorised use of this material is expressly prohibited except as may be authorised by PC-EFTPOS Pty Ltd in writing.

1/9a Ponderosa Parade
Warriewood NSW 2102
Australia
Phone +61 2 9998 9800
Fax +61 2 9986 0530
www.pceftpos.com

Table of Contents

1. Introduction	1
1.1 Before you start	1
1.2 Bank terminology	1
2. Hardware Installation	Error! Bookmark not defined.
2.1 Dial-Up Modem.....	2
2.2 Argent Line	3
3. Installing PC-EFTPOS EFT Server	4
3.1 PC-EFTPOS Setup Wizard.....	4
4. Configuration Wizard	8
4.1 PC-EFTPOS Configuration Wizard	8
4.2 Connecting via a P66 Modem	10
4.3 Connecting via a Tran\$end Line	12
4.4 Connecting via an Argent Line	12

1. Introduction

This document outlines how to install the PC-EFTPOS EFT Server software on a server that communicates directly with the bank and has no terminal attached. Refer to PC-EFTPOS EFT Client Installation Guide for terminal connection.

*Note

- PC-EFTPOS EFT Software must first be installed on the server which will connect directly with the bank.
- On the server which is connecting with the bank, install “EMS Lite”
- Record the IP address of the server. Enter this address when including additional POS connections. See PC-EFTPOS EFT Client Installation Guide

1.1 Before you start

Before you begin the installation of PC-EFTPOS EFT Server software, you should ensure you have the following;

- The latest PC-EFTPOS installation CD, (alternatively, latest software can be downloaded from our website – www.pceftpos.com.au/files/releasecd)
- A P66 modem if the site is using a dial-up service,
- POS-AME (or Telstra ID or Tran\$end ID) supplied by the bank if required.

1.2 Bank Terminology

- **Terminal ID** : This is the number that uniquely identified each EFTPOS terminal.
- **Merchant ID** : This number uniquely identifies each merchant
- **POS AME** : This number is unique to each dial-up connection or Argent leased line. This number is often called a Tran\$end ID, a Telstra ID, or an Argent ID. The number can be anywhere from 6 to 10 digits in length.

The bank will issue details for each terminal at the site as well as the connection to the bank. The following outlines the details each bank will issue:

Bank	Merchant ID	Terminal ID	Dial-up POS-AME	Argent POS-AME	Help Desk Number
ANZ		✓ 11 digit number. This is entered into the merchant ID field on the setup page.	✓	✓	1800039025
Bankwest	✓	✓		✓	131718
CBA	✓	✓		✓	1800022966
NAB	✓	✓	✓	✓	1300369852
St George	✓	✓		✓	1300650977
Westpac	✓	✓		✓	1800029749

2. Hardware Installation

2.1 Dial-Up Modem



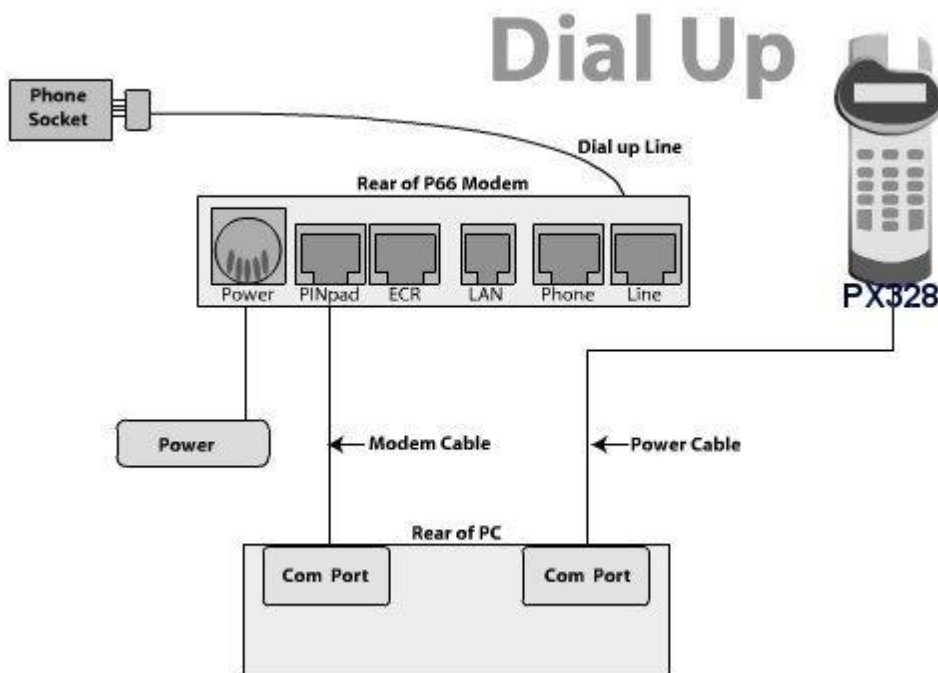
- One P66 Modem is required for any store that requires dial-up connectivity to the bank. The P66 modem utilizes a purpose built EFTPOS modem to connect with the banking network.
- The modem can be shared between any number of EFTPOS terminals within a network.
- There should only be one P66 modem within any single store.

Equipment supplied with P66 Modem

- P66 modem
- Power supply and power cord
- PC connector cable (DB9 to RJ12)
- Dial-up phone cable and connector

Installation Steps:

1. Plug the power supply into a power point and the P66 Modem DIN connector,
2. Connect the phone cable to the P66 modem and the wall socket,
3. Connect the POS cable to the PC COM port and the P66 modem.



2.2 Argent Line

- An Argent installation is normally defined as an AABP 9600bps system.
- This type of Argent installation does not require a P66 Modem.
- Telstra will supply the Argent Terminal Adaptor to be used in the installation

Required Equipment:

- Argent ATA from Telstra
- Installation of ISDB service from Telstra
- Standard RS232 modem cable

Installation Steps:

1. Connect the Argent terminal Adaptor to the ISDN service.
2. Connect the RS232 modem cable from the COM port on the POS to the V24 port on the Argent ATA.
3. The ATA should go to a steady dot after a short while. This indicates that the ISDN is connected.

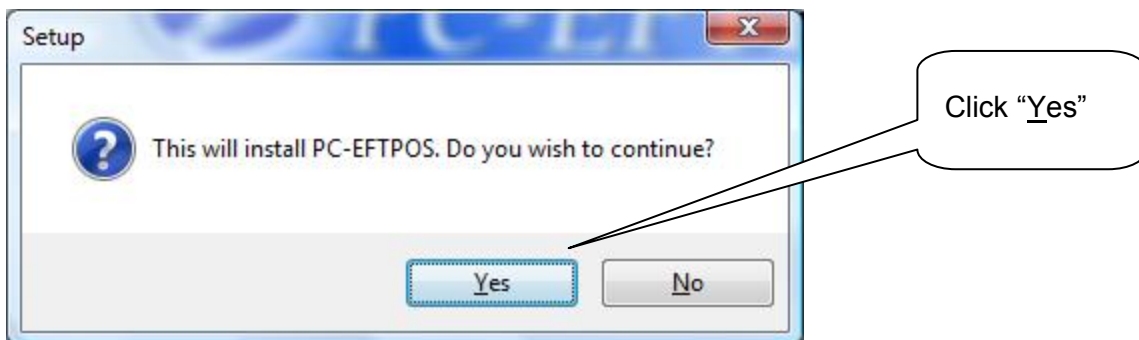
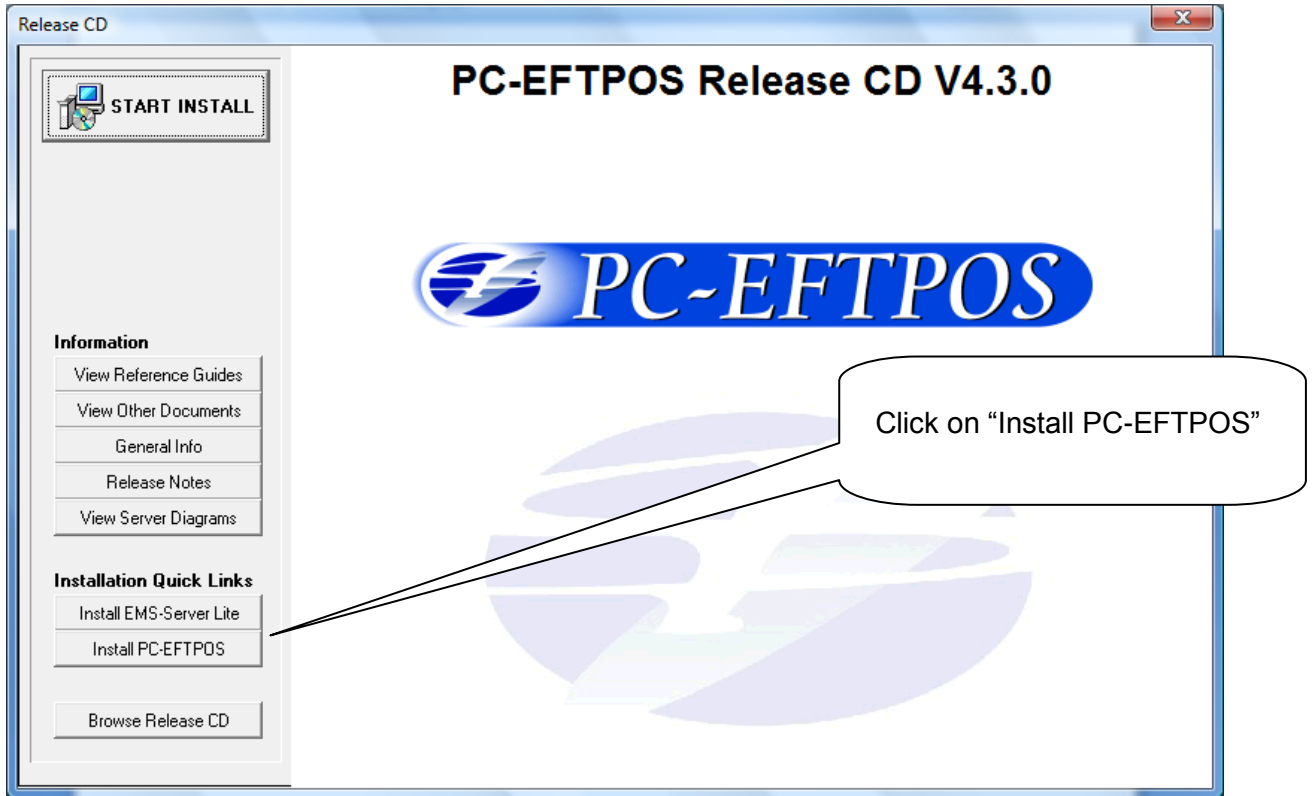
Back pane of the Enhanced Argent ATA.

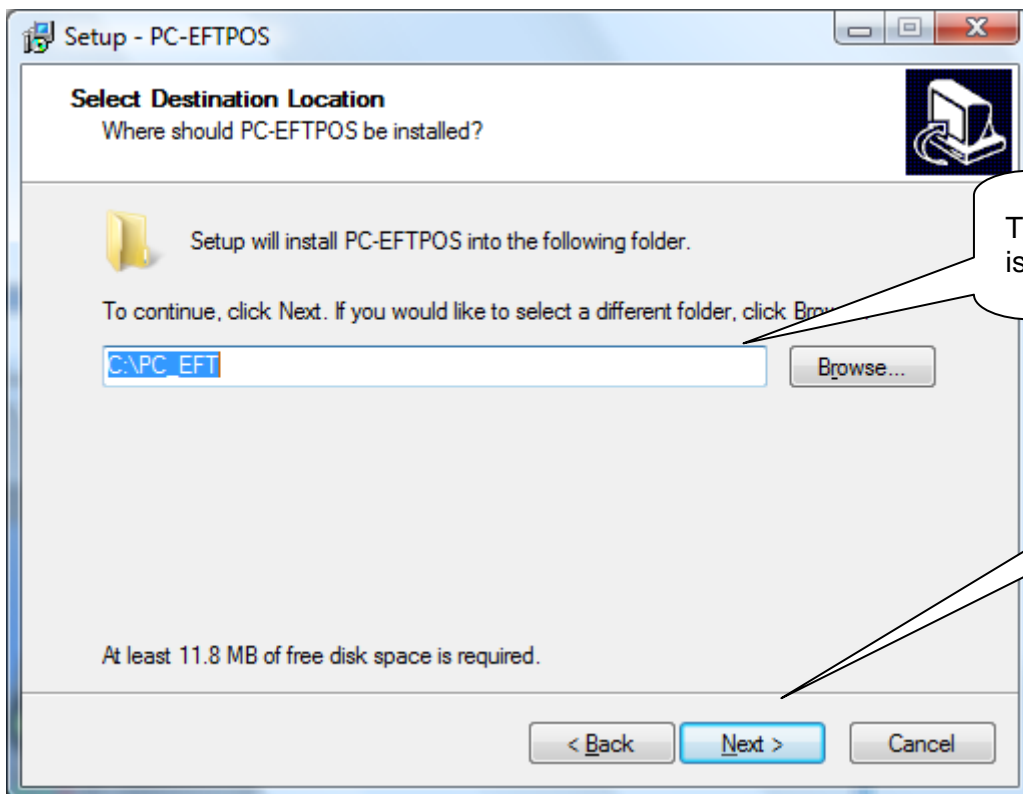


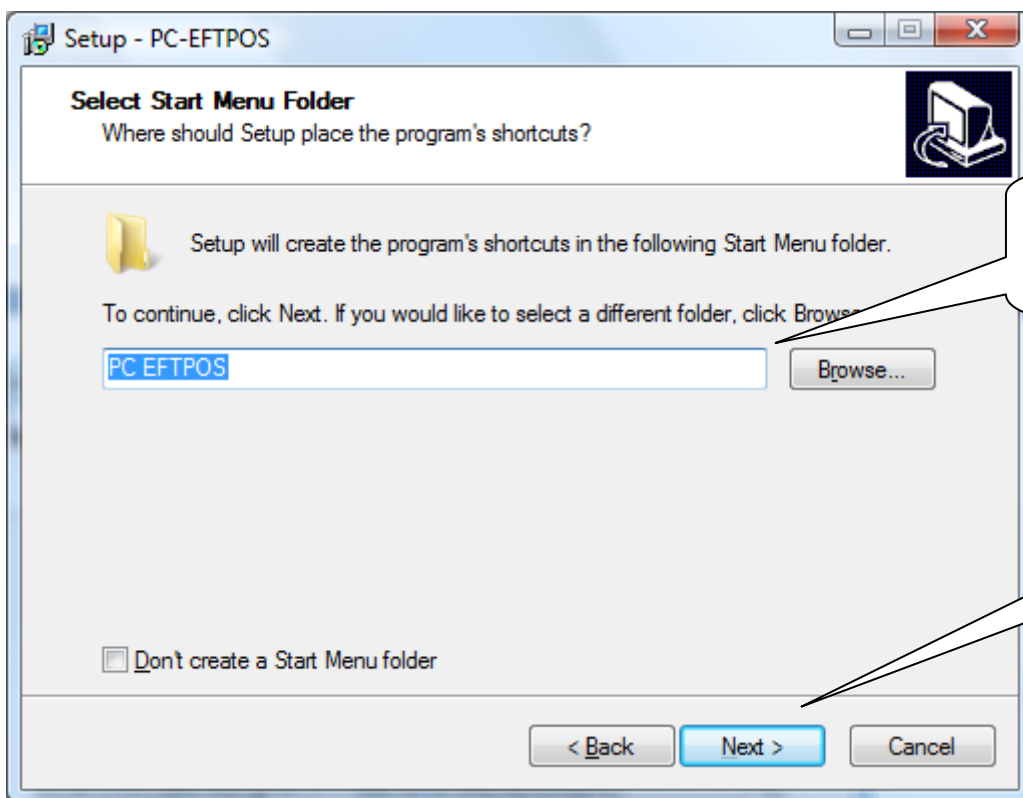
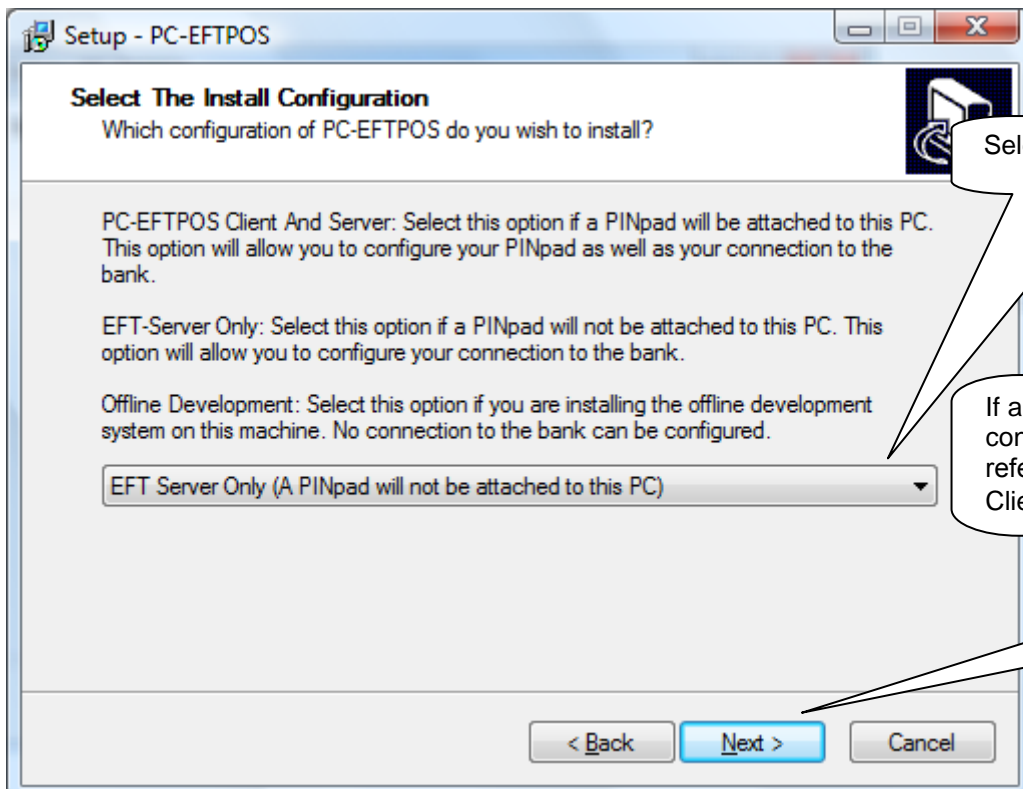
3. Installing PC-EFTPOS EFT Server

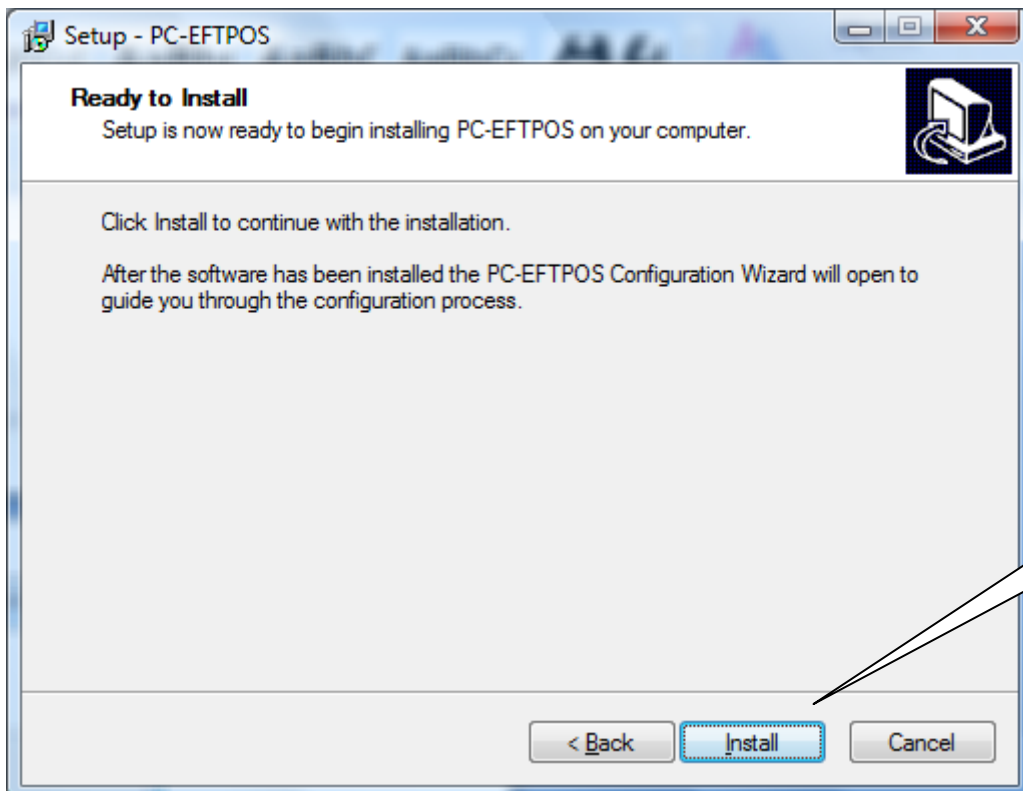
3.1 PC-EFTPOS Setup Wizard

Insert the CD containing the latest release of PC-EFTPOS software and run the setup program.





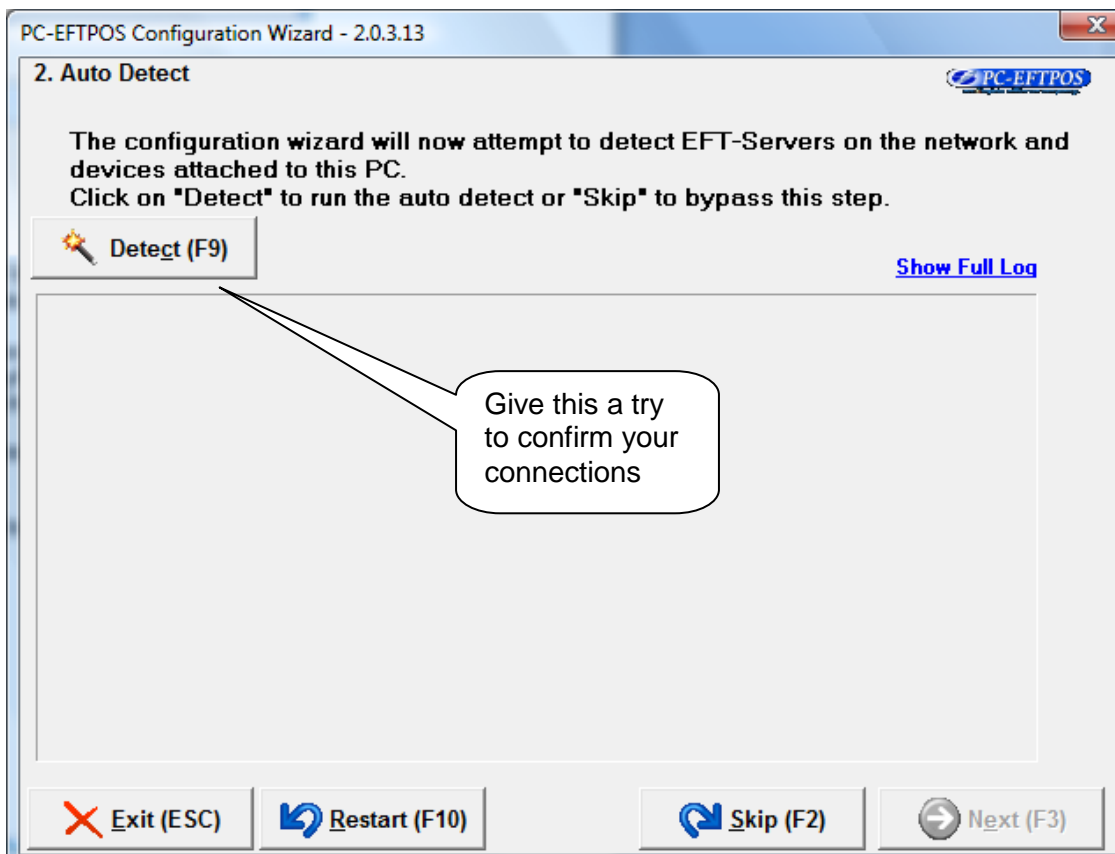
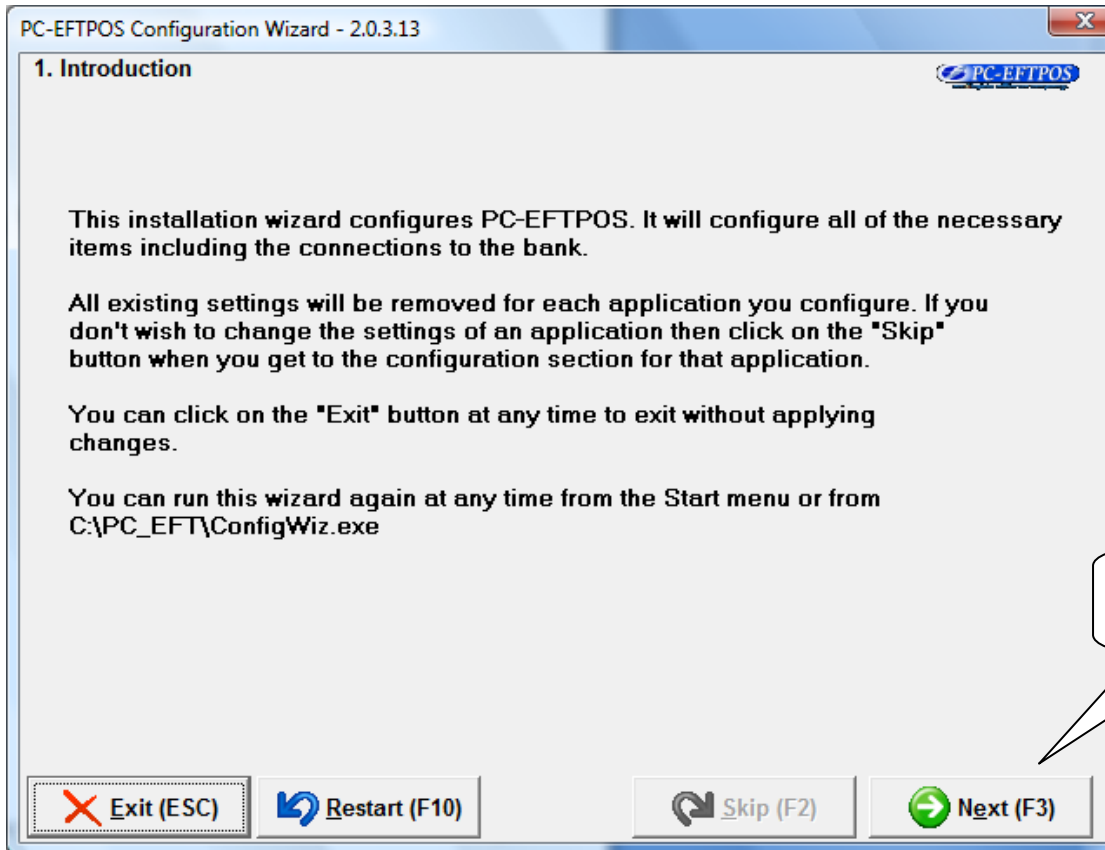


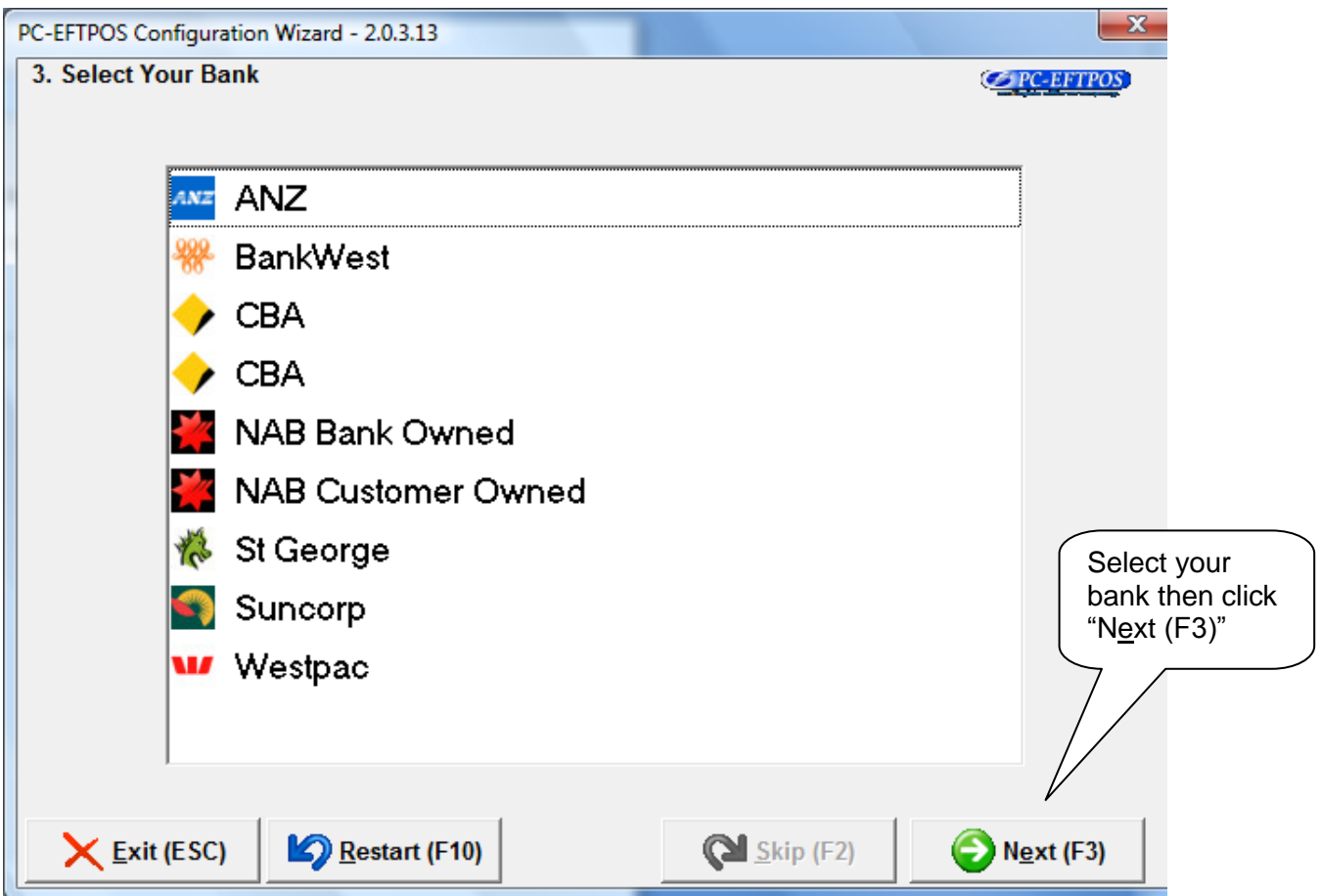
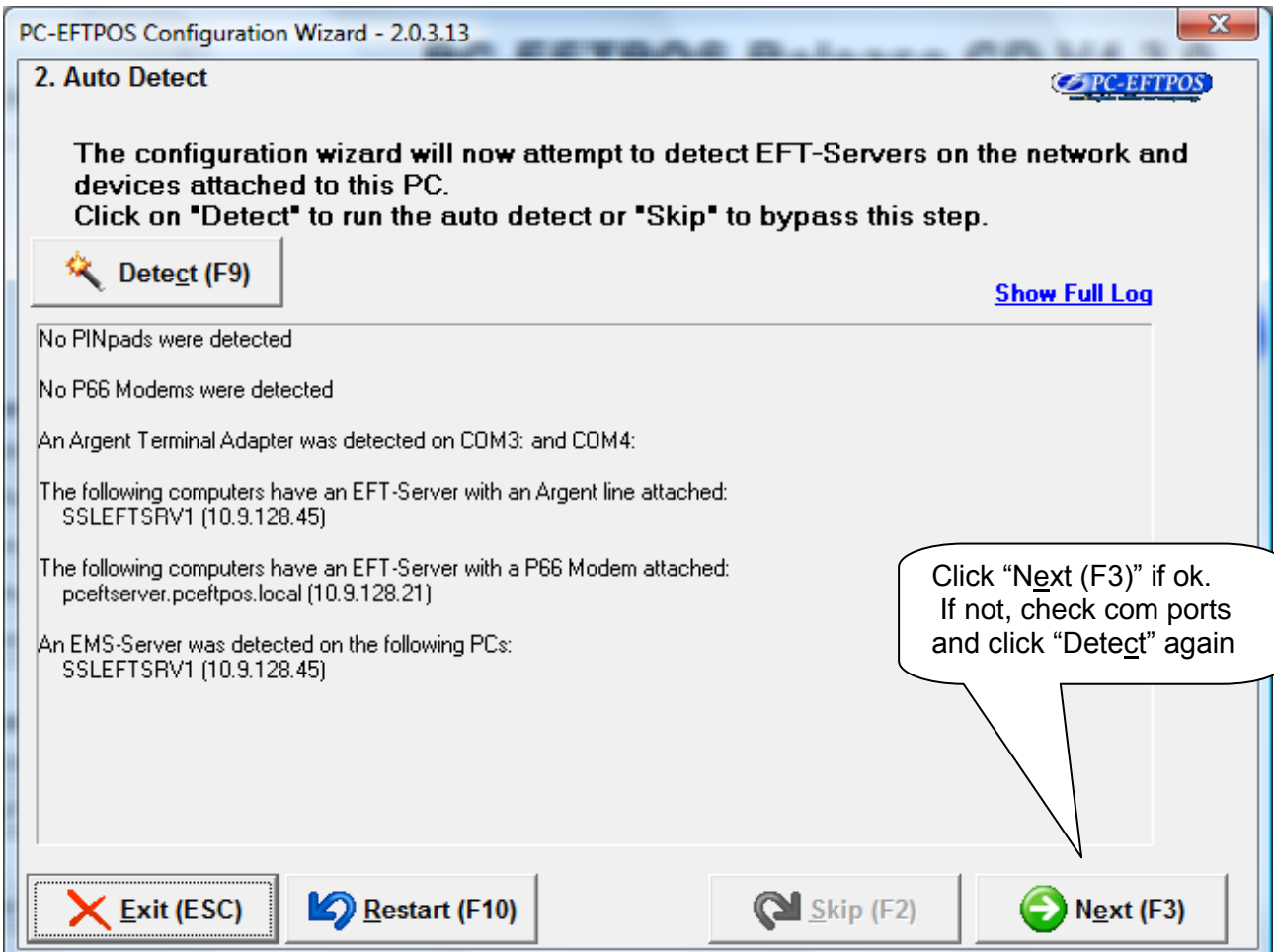


4. Configuration Wizard

4.1 PC-EFTPOS Configuration Wizard

The configuration Wizard will guide you through the installation.





4.2 Connecting via a P66 Modem

PC-EFTPOS Configuration Wizard - 2.0.3.13

7. Adding Transaction Connections

This section allows you to configure your connection to the bank. If you need to enter multiple connections, for example a primary Argent line and a backup P66 Dialup line, the configuration wizard will allow you to return to this screen.

The most common configuration options are as follows:

1. If your primary line to the bank is hosted on another PC you will need to select "To The Bank Via Another PC".
2. If this PC is hosting your primary line to the bank you will need to select "To The Bank Directly From This PC"
3. If your primary line is hosted on another PC, and this PC is hosting your backup line, you will need to select "To The Bank Via Another PC" now and "To The Bank Directly From This PC" when the configuration wizard returns you to this screen.
4. If both your primary and backup lines are hosted on other PCs, you will need to select "To The Bank Via Another PC" now and enter your primary line and "To The Bank Via Another PC" when the configuration wizard returns you to this screen and enter your backup line.

To The Bank Via Another PC

Another PC on the network

To The Bank Directly From This PC

P66 Dialup EFTPOS Modem connected to this PC

TranSend Line connected to this PC

Argent Line connected to this PC

Select "P66 Dialup" and then click "Next (F3)"

Exit (ESC) Restart (F10) Skip (F2) Next (F3)

PC-EFTPOS Configuration Wizard - 2.0.3.13

8. Configuring EFT Server Connection

Select the port which has the P66 modem or Argent Terminal Adapter attached.

COM Port:

If you are installing multiple lines, give the primary line a higher priority value than the backup line.

Priority:

Line Name:

If you need to dial a number to get an external line enter the number in the "PABX Prefix" field. You don't need to change the "Phone Number"

PABX Prefix:

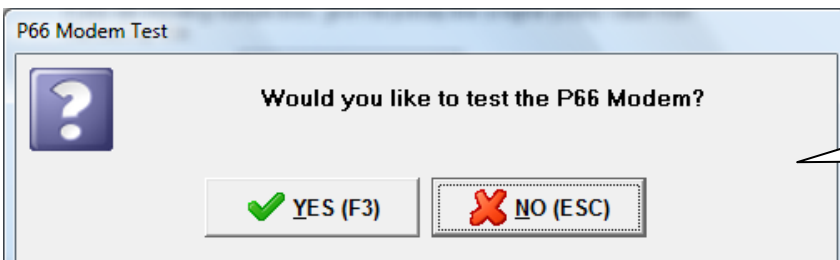
Phone Number:

Choose the COM Port the P66 will be connected to

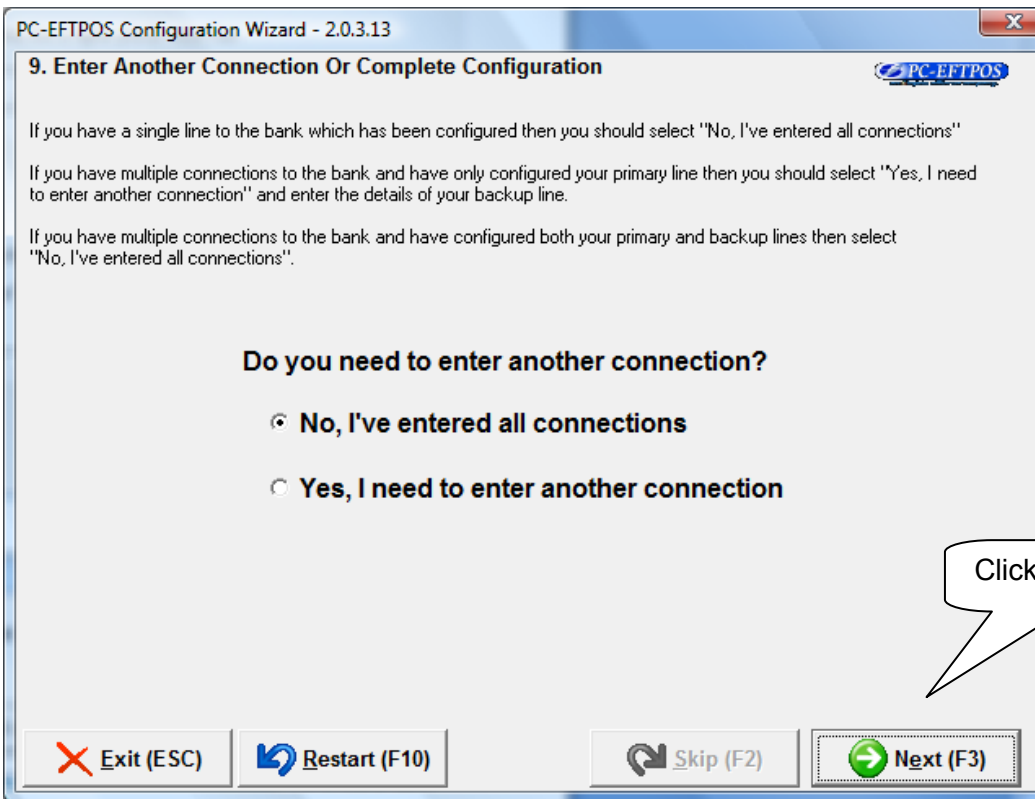
The phone number can be adjusted for a PABX by adding the prefix.

Click "Next (F3)"

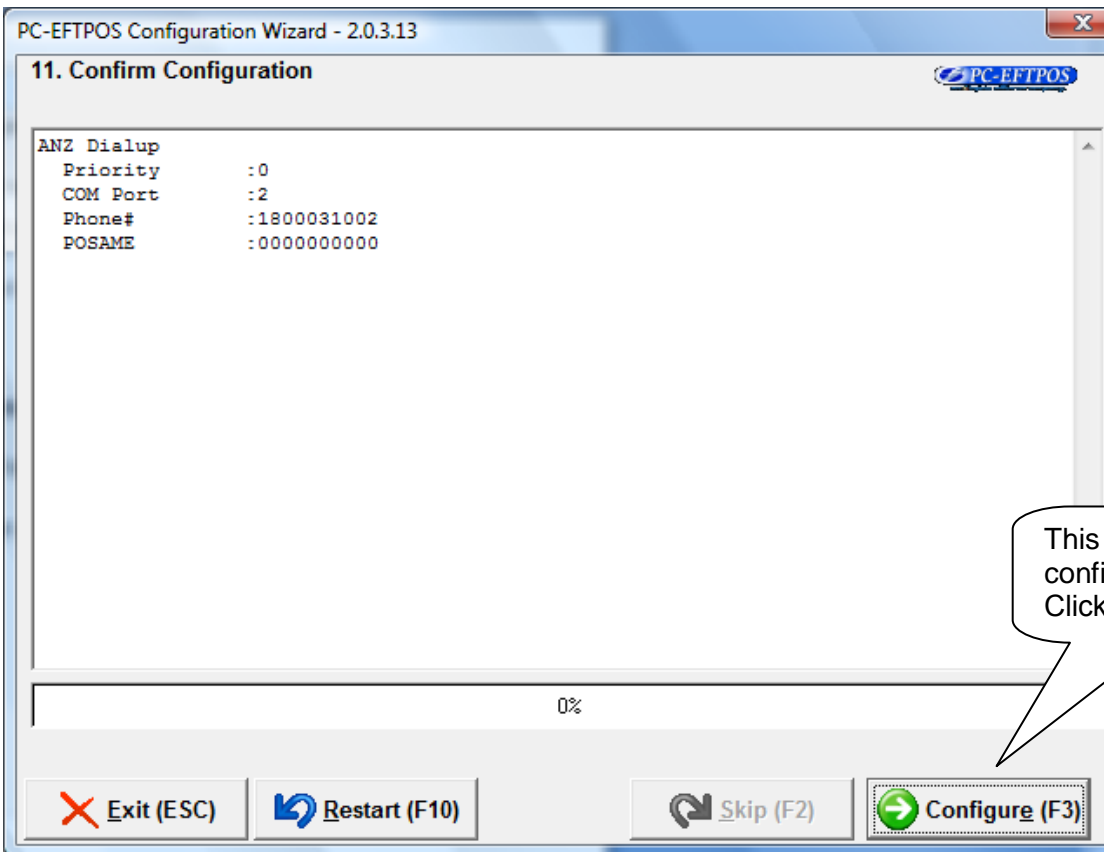
Exit (ESC) Restart (F10) Skip (F2) Next (F3)



Click "Yes (F3)" if you want to confirm the modem connection.



Click "Next (F3)"



This will begin your configuration. Click "Configure (F3)"

4.3 Connecting via a Tran\$end Line

This service has been discontinued from Telstra. Please disregard this option.

4.4 Connecting via an Argent Line

PC-EFTPOS Configuration Wizard - 2.0.3.13

7. Adding Transaction Connections

This section allows you to configure your connection to the bank. If you need to enter multiple connections, for example a primary Argent line and a backup P66 Dialup line, the configuration wizard will allow you to return to this screen.

The most common configuration options are as follows:

1. If your primary line to the bank is hosted on another PC you will need to select "To The Bank Via Another PC".
2. If this PC is hosting your primary line to the bank you will need to select "To The Bank Directly From This PC"
3. If your primary line is hosted on another PC, and this PC is hosting your backup line, you will need to select "To The Bank Via Another PC" now and "To The Bank Directly From This PC" when the configuration wizard returns you to this screen.
4. If both your primary and backup lines are hosted on other PCs, you will need to select "To The Bank Via Another PC" now and enter your primary line and "To The Bank Via Another PC" when the configuration wizard returns you to this screen and enter your backup line.

To The Bank Via Another PC

Another PC on the network

To The Bank Directly From This PC

P66 Dialup EFTPOS Modem connected to this PC

Tran\$end Line connected to this PC

Argent Line connected to this PC

Exit (ESC) Restart (F10) Skip (F2) Next (F3)

Select "Argent Line" and then click "Next (F3)"

PC-EFTPOS Configuration Wizard - 2.0.3.13

8. Configuring EFT Server Connection

Select the port which has the P66 modem or Argent Terminal Adapter attached.

COM Port: COM2

If you are installing multiple lines, give the primary line a higher priority value than the backup line.

Priority: 0 - Low

Line Name: ANZ Argent(AABP)

Enter the POS-AME or Tran\$end ID provided to you by Telstra or your bank.

POS-AME or Tran\$end ID: []

Exit (ESC) Restart (F10) Skip (F2) Next (F3)

Choose the COM Port the P66 will be connected to

Enter the POS-AME number.

Click "Next (F3)"

