



## **EMS-Server Lite Install Guide**

**Release 1.00**

**May 08**

# Revision Record

Version	Date	Author	Document Preparation	Revisions
1.00	May 2008	Clinton Dean	Clinton Dean	Document Creation

*Copyright ©PC-EFTPOS Pty Ltd, 2008. This document contains information proprietary to PC-EFTPOS Pty Ltd. Any reproduction, disclosure or unauthorised use of this material is expressly prohibited except as may be authorised by PC-EFTPOS Pty Ltd in writing.*

1/9a Ponderosa Parade  
Warriewood NSW 2102  
Australia  
Phone +61 2 9998 9800  
Fax +61 2 9986 0530  
[www.pceftpos.com](http://www.pceftpos.com)

# Table of Contents

1. Introduction.....	2
2. Server Installation.....	3
3. EMS-Client Setup (ConfigWiz).....	5
4. EMS-Client Setup (Manual).....	6

## 1. Introduction

---

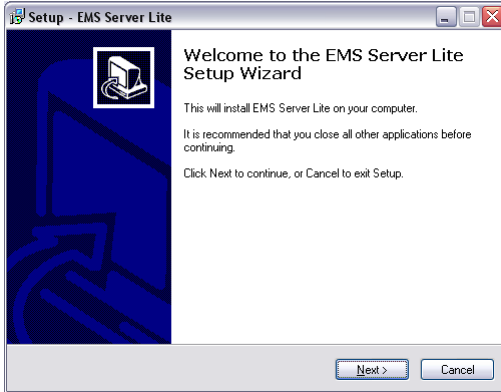
EMS-Server Lite stores a transaction record for a single store. The maximum number of clients that can connect to EMS-Server Lite is 20.

To install EMS-Server Lite you install the server application on a single PC. You then need to configure the EMS-Client on each client PC to connect to the EMS-Server.

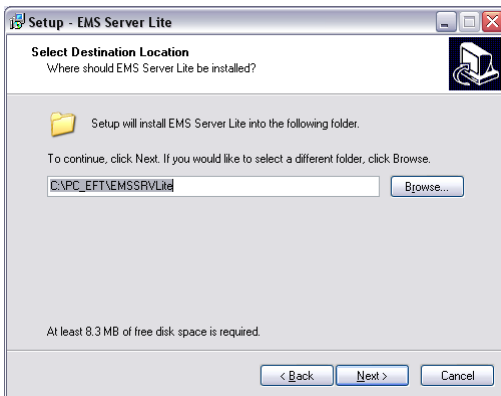
# 2. Server Installation

The server needs to be installed on one PC per store. To open the EMS-Server after installation double click on the yellow “S” icon in the system tray.

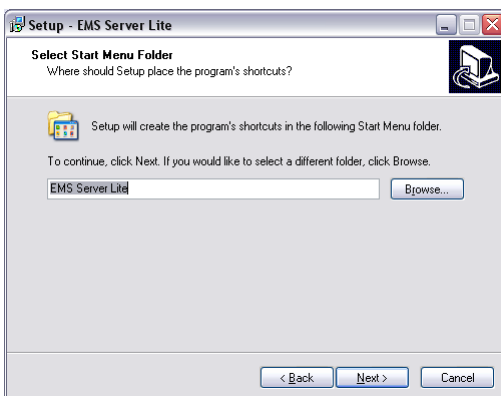
- Run EMSSRVLiteSetup.exe
- Click on “Next”



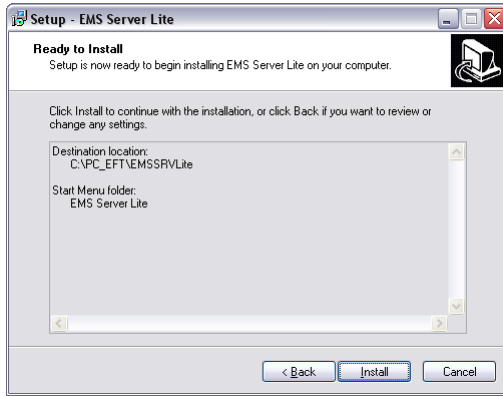
- Click on “Next”



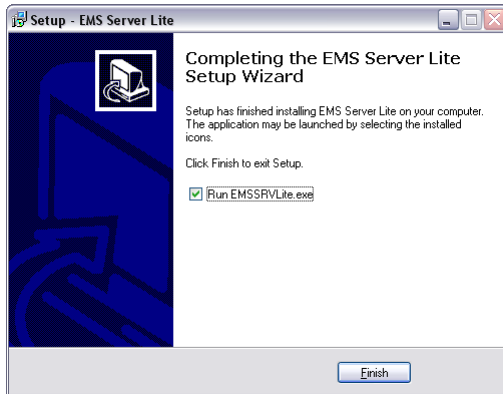
- Click on “Next”



- Click on “Install”



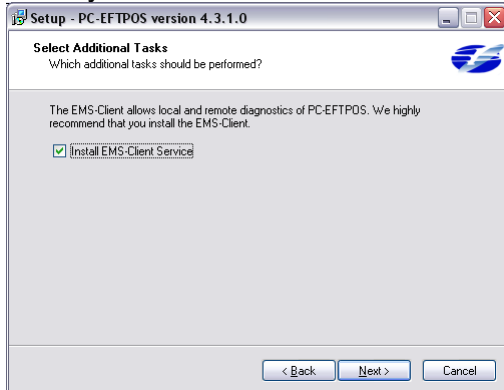
- Click on “Finish”



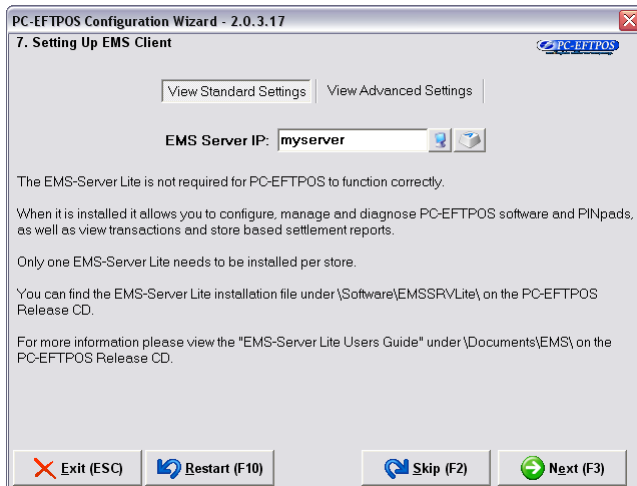
# 3. EMS-Client Setup (ConfigWiz)

The EMS-Client needs to be installed on each client PC with a PINpad attached. The EMS-Client is installed as part of the standard PC-EFTPOS installer.

When you run the installer ensure "Install EMS-Client" is checked.



During the configuration wizard enter the TCP/IP address or the PC name of the computer you installed the EMS-Server Lite on.



# 4. EMS-Client Setup (Manual)

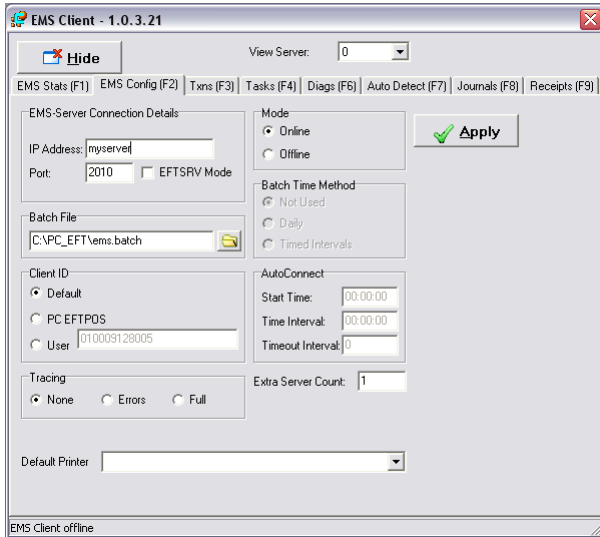
If you didn't install and configure the EMS-Client as part of the initial PC-EFTPOS install you can install and configure it manually.

To install EMS-Client run the following command:

```
{installdir}\EMSCLT.exe /ReInstall
```

To configure the EMS-Client you can use one of the following two methods.

1. Open the EMS-Client (light blue "C" icon), go to the "EMS Config" tab and enter your EMS-Server TCP/IP address or server name. Ensure that "Mode" is set to "Online" and click on "APPLY".



2. Add the following registry keys to the PC:  
KEY: HKEY\_LOCAL\_MACHINE\Software\Ingenico\EMS\EMS-Client\  
NAME: IPADDRESS  
TYPE: STRING  
VALUE: The TCP/IP address or name for your EMS-Server computer  
  
KEY: HKEY\_LOCAL\_MACHINE\Software\Ingenico\EMS\EMS-Client\  
NAME: MODE  
TYPE: DWORD  
VALUE: 0